

LMS

LNG Inventory Solution

MHT Technology Ltd's LNG Inventory Solution




MHT Technology Ltd

Digital Transformation with Human Design

+44 1748 828820

 www.mht-technology.co.uk

 sales@mht-technology.co.uk



LMS keeps your LNG as safe and profitable as possible. Our rollover prediction software further analyses the data to generate forecasts of the tank state.

Discover how our LMS can help your terminal today.



Launched in 2011



Trusted by customers



Systems installed worldwide



Developed in house by industry experts

Overview

LMS keeps your LNG as safe and profitable as possible. LNG is a rapidly growing source of power across the world but brings with it many unique challenges. When differing compositions are stored in the same tank stratification can occur. If left unmanaged stratification can result in a rollover with catastrophic consequences, such as loss of containment, loss of reputation and loss of life. LMS manages your site, giving a clear analysis of tank profile data, giving real-time notification of stratification.

Our rollover prediction software further analyses the data to generate forecasts of the tank state. This enables LNG to be sourced from different sources and stored safely; giving terminals significant cost savings.

The LMS system has been designed to interface to all instruments commonly found on LNG storage tanks, and to collect and present the instrument data through a range of intuitive graphical user interfaces. A typical LNG Tank will have a wide range of measurement instruments to measure Liquid Level, Liquid Density, Liquid and Vapour Temperature, Liquid and Vapour Pressure, Skin Temperature and much more.

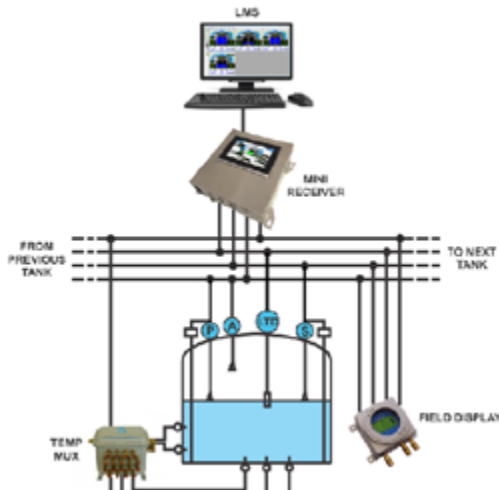
Typically, each tank would be fitted with an LTD gauge, two further level gauges configured as a Primary and Secondary and an Alarm Gauge. The LTD gauge is a servo-operated unit mounted on the tank roof. The purpose of the LTD gauge is to take accurate profiles of temperature and density throughout the liquid, and whilst not profiling provides a continuous liquid level, temperature and density measurement.

Software Features

All measured and calculated tank parameters are accessible to your tank farm and terminal operators as well as to connected host systems. Multi-user operation is provided by the inbuilt Web Server offering the opportunity to access data at any connected location (local/remote) e.g. for administrative and accounting purposes.

Core Functionality:

- Live data.
- Calculated data.
- Real-time and historical trending.
- Alarm management and annunciation.
- Instrument support, Host Interfacing.
- LNG Rollover Prediction model.
- Automatic LNG Composition Selection.



1 Standalone Configuration

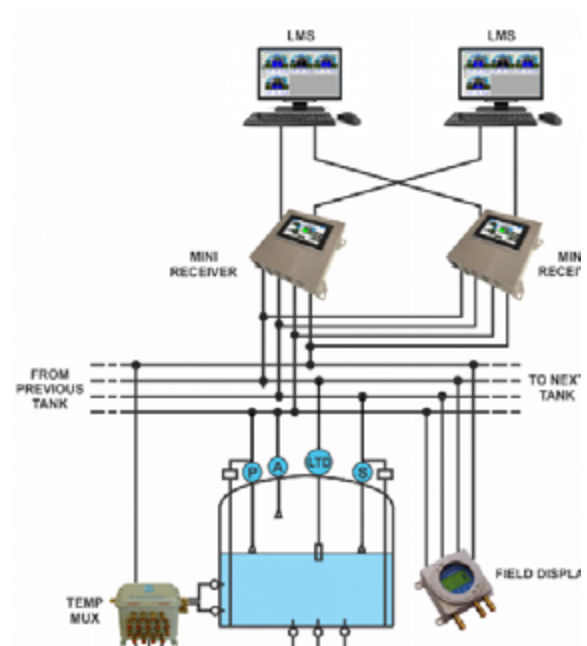
A PC running LMS is connected to a Mini Receiver via either a Serial Data or Ethernet connection. The Mini Receiver is then further connected to the field instruments via field bus interfaces. The Mini Receiver can be configured to provide a wide range of different electrical interfaces allowing it to be connected to many different vendor instruments.

2 Redundant Configuration

The illustration shows a typical redundant configuration with two PCs and two Mini Receivers. In the event of a failure, the redundant machines are used to maintain system functionality.

The degree of redundancy and architecture of the system is dependent to some extent on the redundant features of the instruments. Some instruments provide dual outputs so that they can be connected to two independent hosts. In the illustrated configuration, only one Mini Receiver can be active, the other must remain passive.

If all instruments had two outputs both Mini Receivers could be active simultaneously. Normally both PCs will be collecting data from the active Mini Receiver and it will be polling all field instruments, the passive Mini Receiver will read data from the active one to make a "Hot" switchover possible.



3 Live Data

LMS can be configured to poll the tank instruments for a wide range of data values. The actual data available in any application depends on the instruments and their capability.

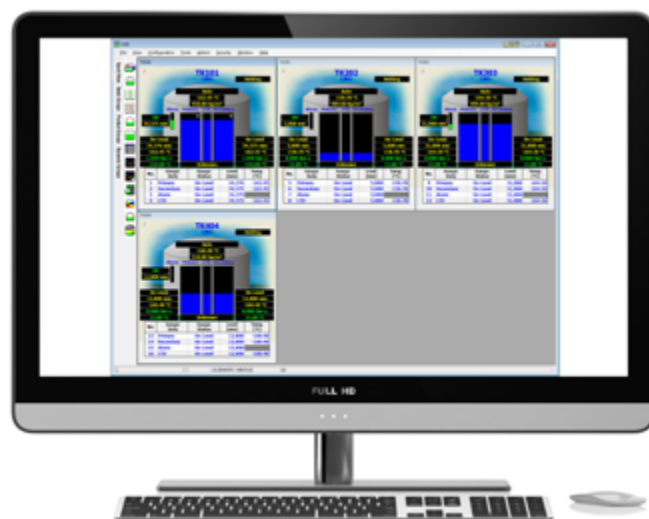
In general, the following live data is collected:

- Liquid Level
- Average Vapour Temperature
- Average Liquid Temperature
- Current Liquid Density
- Vapour Pressure
- Skin Temperature (Optional)

On a scheduled basis the following additional live data

can be collected:

- Level, Temperature and Density Profile



4 Calculated Data

LMS can be configured to calculate certain inventory parameters for each LNG tank. To calculate inventory each tank must be provided with a tank calibration table.

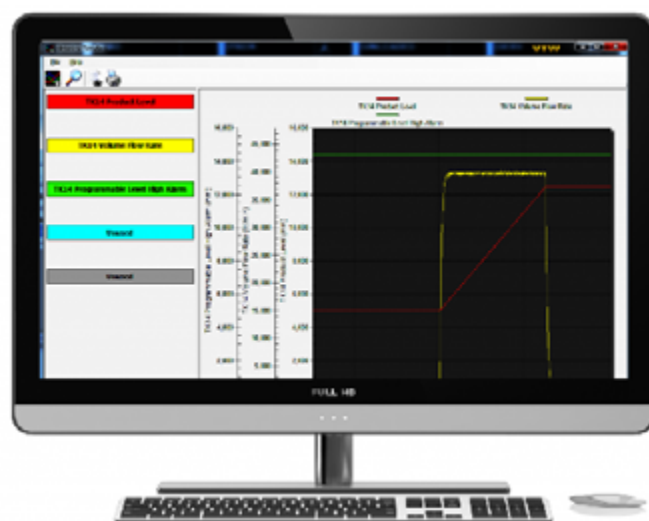
In general, the following inventory parameters are calculated:

- Total observed Volume
- Gross observed Volume
- Ullage Volume
- Gross Mass
- Ullage Mass
- Liquid Mass
- Vapour Mass
- Calorific Value (Optional)
- Wobbe Index (Optional)
- Energy (Optional)
- Multiple trends

5 Real-Time and Historical Trending

LMS has an integrated trending module that logs live and calculated data for all instruments to the computer's hard drive. Through the intuitive graphical user interface the user can view trend data in real-time or as a historical trend view.

Multiple trends can be placed on the same graph showing different data values for the same, or different tanks. A data cursor can be placed on a trend to view the numerical value at a particular date and time. The trend features are excellent tools for analysing the performance of instruments and tracking product movement in tanks.



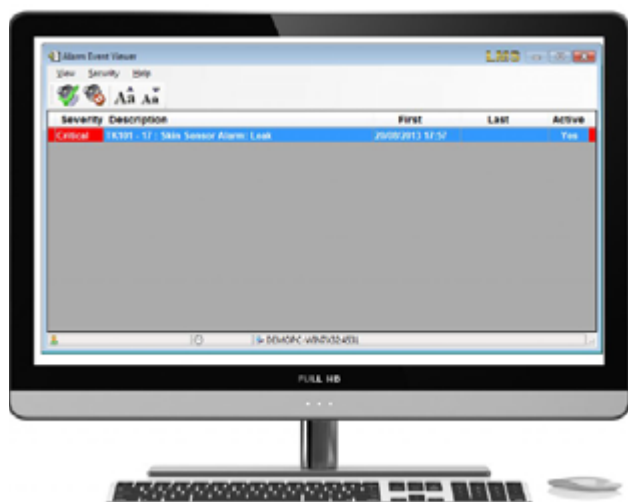
6 Alarm Management and Annunciation

LMS has integrated alarm management and annunciation on a system that can be customised to meet the requirements of most sites.

All alarms are time and date stamped and logged to a database. Each alarm can be configured to optionally, play a sound or voice message, require acknowledgment, send an SMS or e-mail, plus much more. Alarms can be prioritized by severity so that the highest severity alarms cannot be masked by lower severity alarms.

Alarms are typically available for the following conditions:

- High-High, High, Low, Low-Low, Level Alarms
- High/Low Flow Alarms
- High/Low Temperatures and Density Alarms
- Stratification Detection on Alarm
- Temperature/Density profile, Deviation Alarm
- Unauthorised Movement Alarm



7 Instrument Support

LMS has the ability to support a wide range of different instruments.

The following gauge types are supported:

- Scientific Instruments 6280, 6290, 7000 ®
- Honeywell Enraf Servo / Radar ®
- 'Saab' Emerson Radar ®
- Endress+Hauser Proservo / Radar
- Whessoe 1146 LTD



8 Host Interfacing

In many applications, LMS forms an essential part of a bigger system. Consequently, it is necessary to provide data to a number of host systems. LMS can be configured to provide data to a host in the following formats:

- Modbus RTU
- Modbus TCP
- OPC DA
- OPC UA
- ODBC

LMS can support multiple host connections. The Modbus and OPC connectivity are read and write allowing the host to download data and send gauge commands.

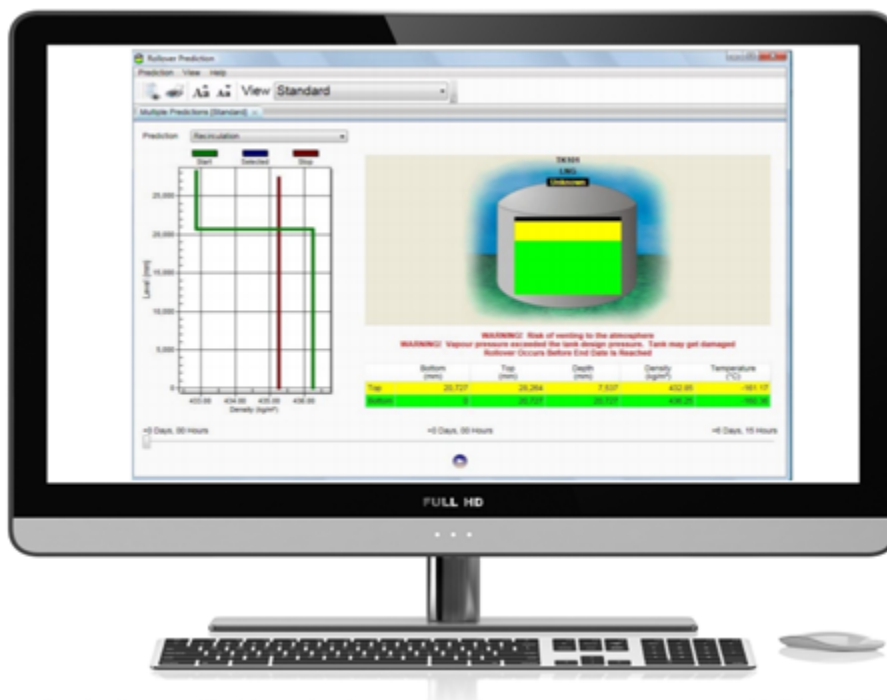
LMS has been interfaced to many host systems some of which are listed below.

- Honeywell Experion ®
- Foxboro I/A ®
- Emerson Delta V ®

9 LNG Rollover Prediction Model (Optional)

This model allows the user to visualise the evolution of temperature, density, boil-off and the layer thickness of the stratified layers within an LNG tank. The model can be run with either manual or live data and is a fully integrated feature of the total LNG Tank Management solution. If the model predicts a potential rollover, the model will display the time to rollover as a rollover alarm. The time to rollover and the stratification status can be transmitted to the site DCS for further annunciation. profiles. MHT Technology developed the model in association with the University of Sheffield.

A feature of the MHT model is its ability to infer heat and mass transfer coefficients from the real-time LTD profiles. Heat and mass transfer coefficients are used by the model to define the rate at which heat and mass can move between strata. In MHT's software, the heat transfer coefficient can be entered manually by the user (manual mode) or can be inferred from an inbuilt empirical correlation (empirical mode). The third mode, called inverse mode, estimates heat and mass transfer coefficients from LTD profiles.



10 Automatic LNG Composition Selection

This new feature automates the process of forecasting rollover in LNG storage tanks. In previous versions of the software, it was incumbent on the operators to make the best guess as to the composition of the LNG in the storage tank by setting it following a receipt of LNG into the site. With the Automatic LNG Composition feature in Tankvision LMS the density and temperature measured by the LTD gauge is matched against a database of known compositions.

The composition of the LNG in the tank is a critical input to the rollover calculation. The ability of the species in the LNG to migrate between strata and the differences in thermal expansion of those species in the layers affect the time taken for density equalisation to occur. For an accurate forecast, it is therefore essential that a close approximate is fed into the model's input parameters. The composition selected by the automatic system is further refined in the model by "tuning" the starting composition to match the actual temperature and density of the layer.

It is expected that the composition of the LNG in the storage tank will change over time: there will be some mixing of the layers and preferential boil-off of the lighter species from the upper layer. The model tunes the input composition as part of its process, the automatically selected composition serves only to act as a starting point for the calculation.

Tankvision LMS provides site managers with the tools to maintain a list of LNG compositions that their site will handle. This database is set up during commissioning and subsequently updated when new sources of LNG are imported into their terminal. Crucially, unlike some vendors who charge for updates to the composition database, sites can easily enter details of new gas fields into Terminalvision LMS. For export terminals and peak shaving sites, this database is unlikely to change within the lifetime of the system; for import terminals only when a new LNG source has been selected.





Benefits



Integration

LMS integrates all major types of tank measurement instruments into one system. LMS collects and presents the instrument data through a range of intuitive graphical user interfaces.

It is designed to handle all the data acquisition, supervisory control and monitoring required in a single fully integrated solution.



Redundancy

An LMS system can operate in a simple standalone configuration or as a fully redundant system where security and integrity are of paramount importance. The LMS system has a flexible and scalable architecture allowing it to be tailored to different applications easily.



Efficiency

All measured and calculated tank parameters are accessible to your tank farm and terminal operators as well as to connected host systems.



Flexible Operation

Multi-user operation is provided by the inbuilt Web Server offering the opportunity to access data at any connected location (local/remote) e.g. for administrative and accounting purposes.

PC Requirements

Operating system:	Windows 11 Windows Server 2025
Platform:	Microsoft.NET Core
Database:	Microsoft SQL Server 2022
Disk space:	Minimum 80 GB
Memory:	Minimum 16 GB
Processor:	2 GHz Dual Core Processor
Resolution:	1920 x 1080
Connectivity:	Dependent on instrumentation (either Ethernet or Serial)



Talk to us about out how
LMS can benefit your site



+44 1748 828820



www.mht-technology.co.uk



sales@mht-technology.co.uk